



HOW TO BUILD A SCALABLE MULTI-AGENT AI SYSTEM WITH MULESOFT?

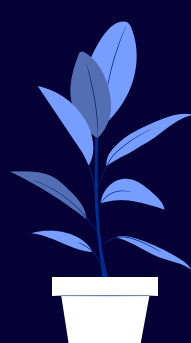
Multi-agent AI systems work best when each agent can access the right data securely and reliably. MuleSoft provides the integration backbone that lets AI agents work together – safely, consistently, and at scale.



What Is a Multi-Agent AI System?

A network of specialized AI agents that

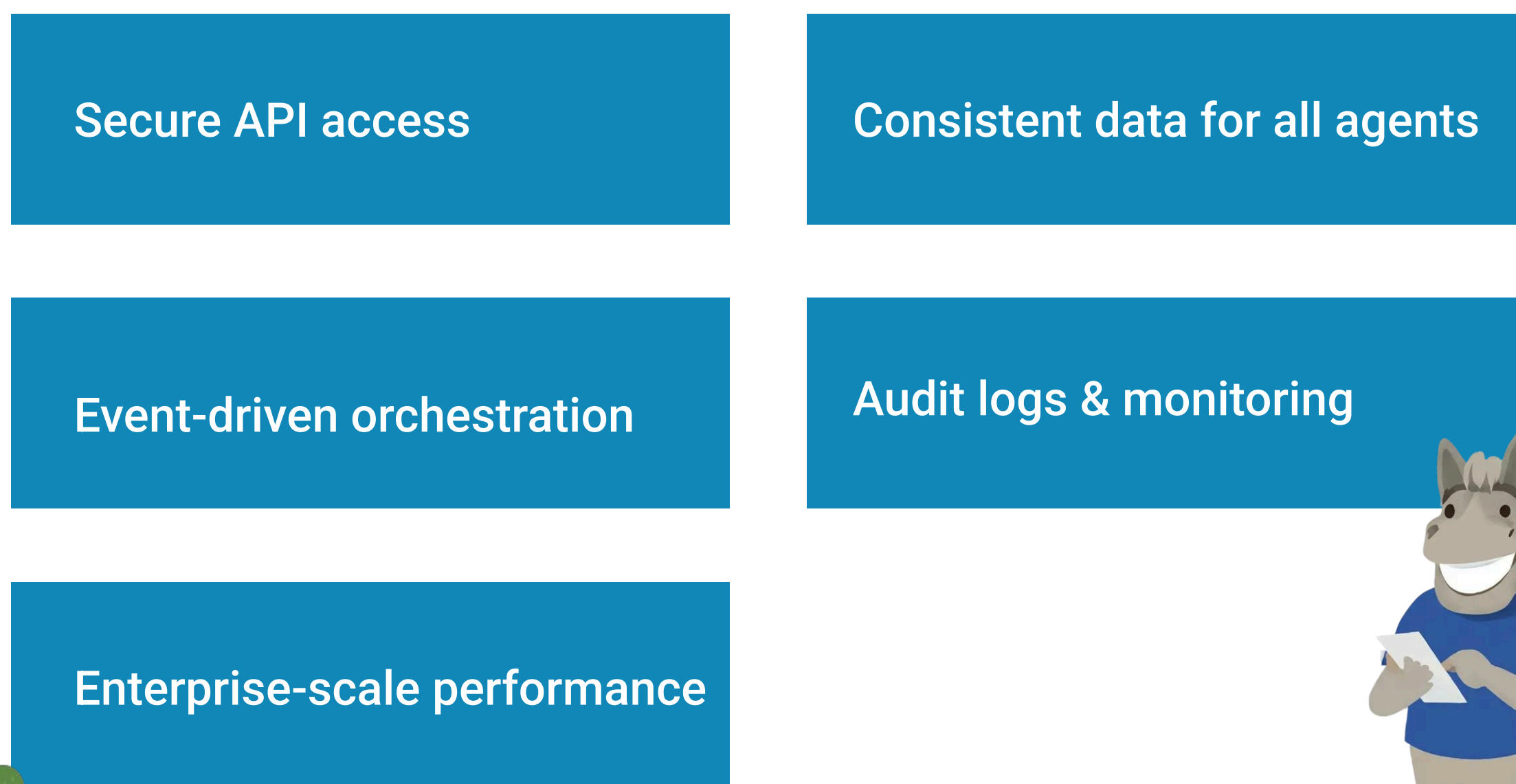
1. Extract, validate, decide, or monitor
2. Collaborate in real time
3. Communicate through APIs
4. Handle full business workflows end-to-end



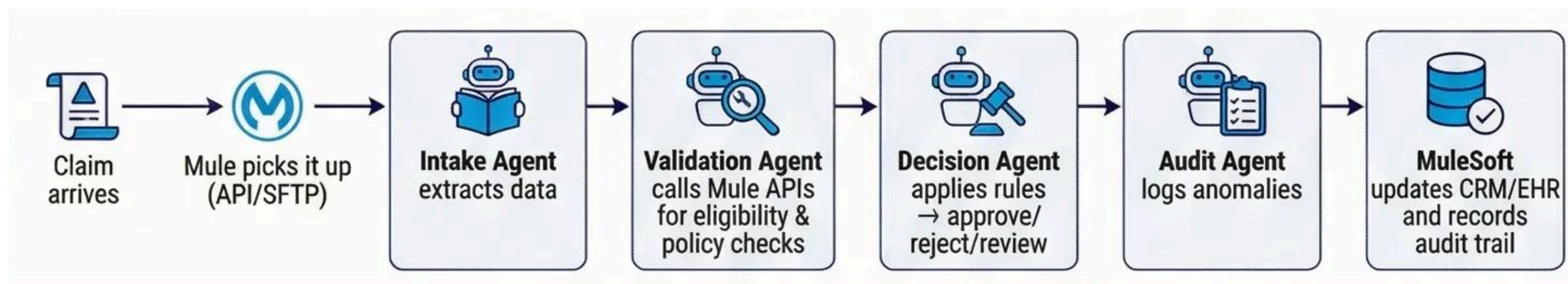
Challenge	Solution
Agents break without clean, governed data.	MuleSoft provides secure, structured connections to enterprise systems.

WHY MULESOFT?

MuleSoft acts as the “control center” for multi-agent operations



Healthcare Claims Example

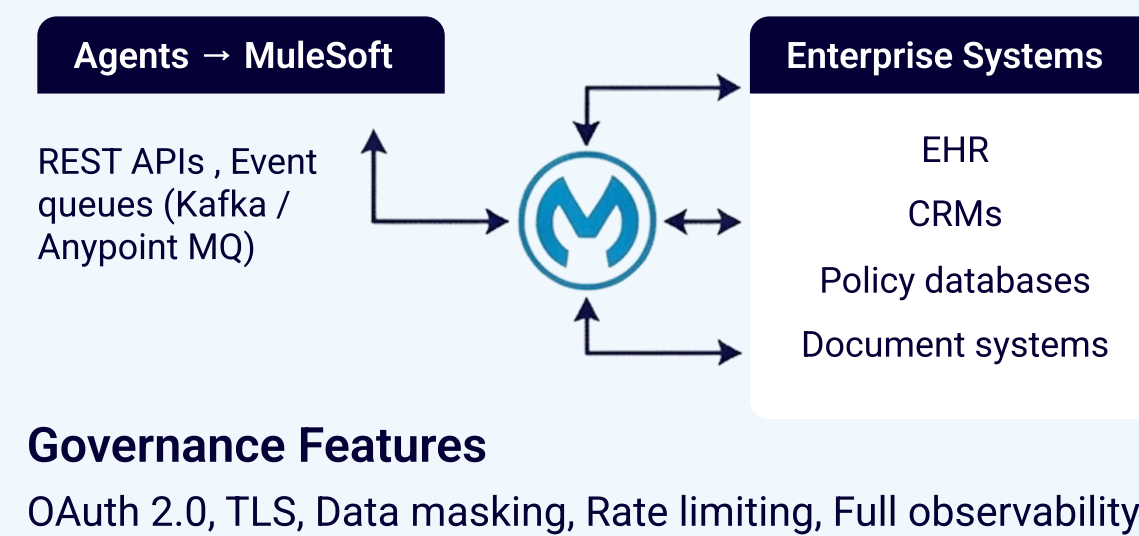


Outcome: Faster claims, fewer errors, fully traceable decisions.

What Agents Usually Do

Agent	Responsibility
1. Intake Agent	1. Reads PDFs, extracts fields
2. Validation Agent	2. Validates data using Mule APIs
3. Decision Agent	3. Applies rules or reasoning
4. Audit Agent	4. Flags anomalies, logs to Salesforce

How MuleSoft Connects Everything



Industry Use Cases

- 01 **Healthcare** → Claims, prior auth, summaries
- 02 **Banking** → Loan underwriting
- 03 **Insurance** → Fraud detection, policy renewal
- 04 **Retail** → Inventory prediction
- 05 **Manufacturing** → Predictive maintenance

Best Practices for Success

- 01 Start with ONE workflow, then scale
- 02 Use async patterns (queues) to avoid chain failures
- 03 Keep agents lightweight; keep logic in Mule APIs
- 04 Make MuleSoft the single source of truth
- 05 Establish dashboards early for visibility

Want help building your first multi-agent workflow with MuleSoft?



[Let's Map Out Your Use Case And Build A Working Pilot.](#)