



CORE CAPABILITIES OF AI TESTING AGENTS AND THE TOOLS TO OPTIMIZE THEM

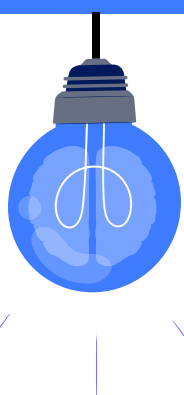
AI Testing Agents are context-aware systems built to handle modern QA demands. They go beyond static scripts by dynamically learning from past executions, adapting to change, and auto-generating tests that mirror real user behavior.



01) Self-Healing Scripts

Agents auto-adjust when UI elements change—no manual rework needed.

Example: A “Submit” button renamed to “Confirm”? AI maps context and keeps the test running.



02)Intelligent Prioritization

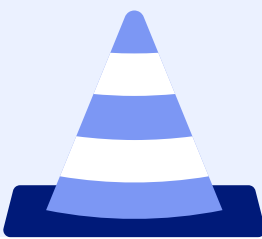
Test what matters first. AI analyzes code changes and defect history to pick high-impact flows.

Example: Only checkout updated? Skip the rest—focus where it counts.

03) Behavior-Based Testing

Real user data drives test creation. AI mirrors actual user paths to improve test coverage.

Example: 80% log in via Google → AI auto-tests that path.



04) Natural Language Scripting

Non-coders write tests in plain English; AI turns it into executable code.

Example: “Verify password reset via email” → AI builds complete test.

05) Visual AI Testing

Spot visual bugs across devices using computer vision.

Example: “Place Order” button clipped on Safari? AI flags it—even if logic passes.

06) Continuous Learning

Agents evolve with every cycle—reducing redundancy and improving accuracy.

Example: Detects flakey test behavior and adjusts execution strategy.

07) Autonomous Test Exploration

Agents explore and learn new app paths dynamically—no manual setup.

Example: A new “Offers” page? AI finds it and tests it on its own.

08) Test Maintenance Automation

AI identifies and archives outdated test cases to keep things lean.

Example: Login test not triggered recently? AI suggests removing it.



TOOLS THAT USE AI TESTING AGENTS

UiPath – Agent Orchestration

Kobiton – Mobile Testing & Visual Checks

TestRigor – Scriptless Testing

Functionize – NLP-Based Test Generation

Mabl – Exploratory/Regression Testing

Applitools – Visual Testing



From faster feedback to fewer failures—**AI agents** keep your QA future-ready.

[Get started today!](#)