

How the API Lifecycle Works?

Every phase of this lifecycle builds on the one before it, ensuring that the API satisfies the needs of the consumers as well as the developers.

01

Defining the API's Purpose

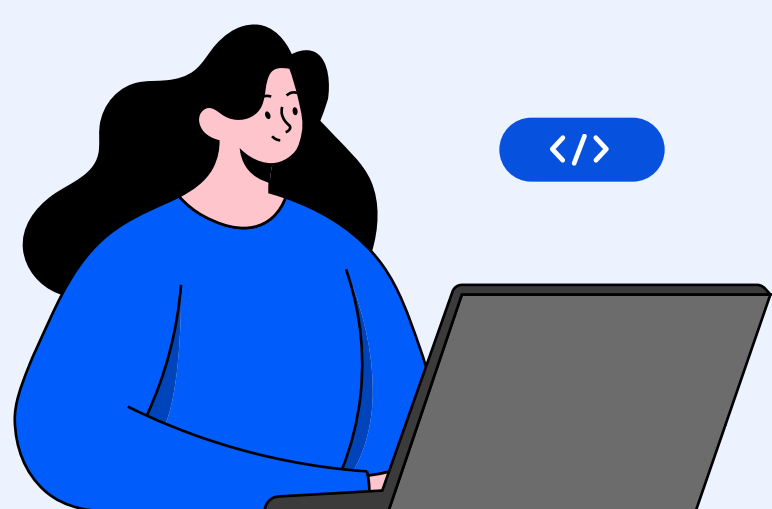
Establish the specific problem the API will solve and its intended functionality. This foundational step guides all subsequent phases.



02

Development Phase

Developers create and test the API, focusing on functionality, reliability, and performance under various conditions.



03

Monitoring and Maintenance

Continuous tracking of the API's performance to identify issues early and ensure it operates efficiently.



04

Continuous Improvement

Regular updates to add new features, optimize performance, and ensure backward compatibility through version control.



05

Adapting to Changes

The API is refined based on evolving business needs and technological advancements to maintain its relevance.



06

Retirement and Transition

When an API reaches its end-of-life, a smooth transition plan is implemented for users to migrate to newer versions or alternatives without disruption.



Looking to optimize your API cycle?

[Talk to our experts today!](#)