

CHOOSING THE RIGHT UIPATH PARTNER: A ROADMAP TO RPA SUCCESS

KEY CONSIDERATIONS

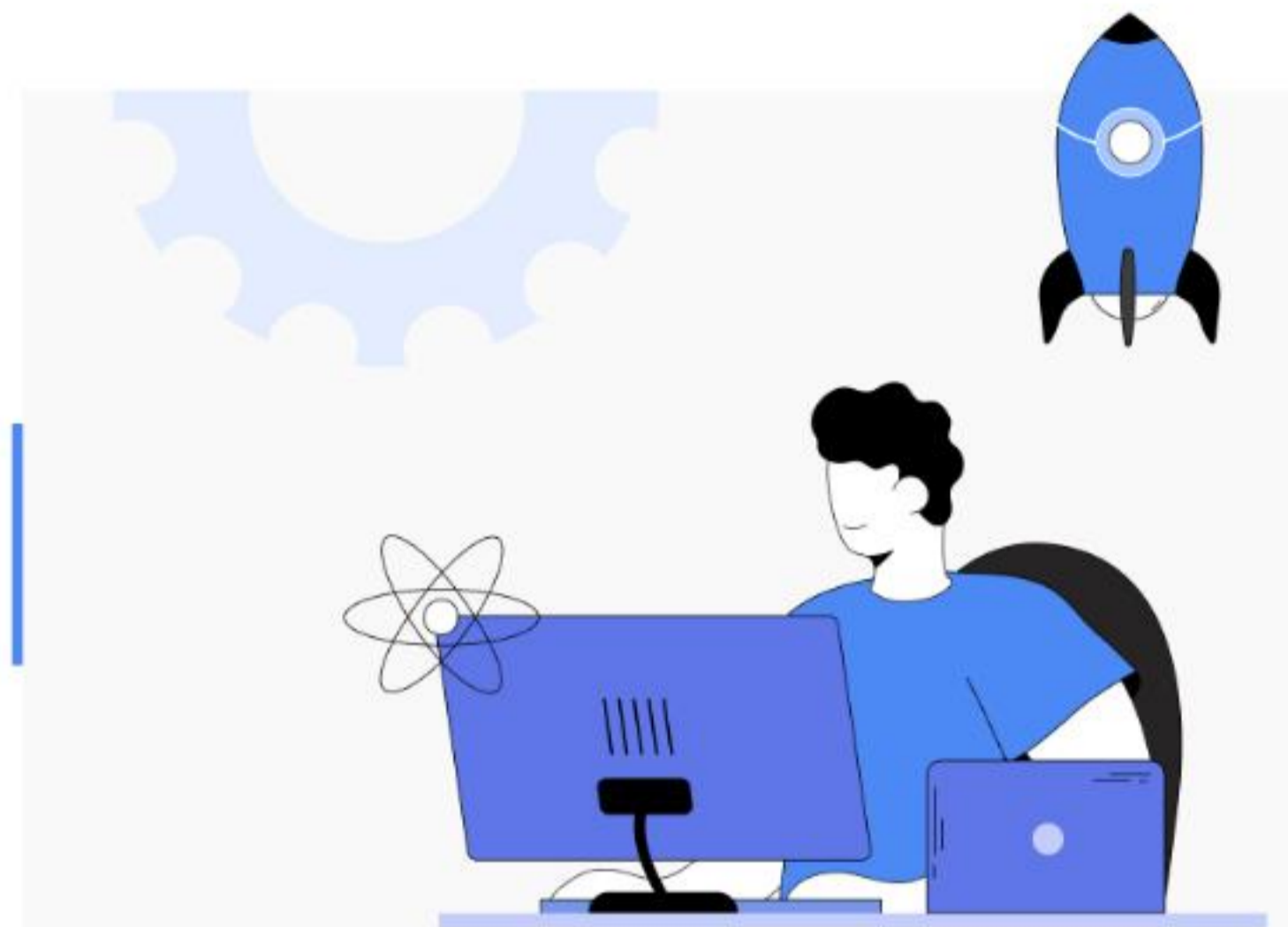


Industry Knowledge and Experience

Proven track record and high customer satisfaction. Relevant industry experience and ability to address specific challenges.

Adaptability and Innovation

Staying ahead of industry trends. Investing in R&D and exploring emerging technologies like AI and machine learning.



Understanding of Business Objectives

Tailoring solutions to align with strategic priorities. Providing insights based on industry best practices.



Ongoing Support and Training

Comprehensive post-implementation support. Training programs to maximize RPA investment value.



Measurement and Demonstration of Impact

Regular reports tracking key metrics. Demonstrating ROI of implemented solutions.



UiPath Partner Levels

UiPath Partner
PLATINUM

Platinum Partners:

Consistently deliver exceptional results with end-to-end UiPath business automation platform solutions and maintain a large group of certified RPA specialists.

UiPath Partner
GOLD

Gold Partners:

High-level expertise and understanding of automation with proven track record of successful implementations.

UiPath Partner
REGISTERED

Authorized Partners:

Foundational RPA knowledge and market presence with technical know-how in providing UiPath business automation platform solutions.



UiPath Certified
PROFESSIONAL SERVICES

UiPath Services Certified Partners:

Elite group recognized for advanced delivery skills and successful project implementations.

Accelirate: A Leading UiPath Services Certified Platinum Partner



One of the few US-based firms with both certifications.



94% UiPath Services Network customer satisfaction score.



One of the few US-based firms with both certifications.



Certified in UiPath Process Mining and Document Understanding.

Innovative service offerings, including



- 90-day automation accelerator
- Process discovery program
- Customizable bot monitoring and maintenance program.